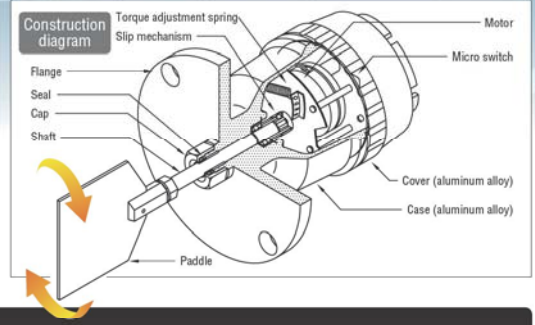


Rotary Paddle Type Level Switch

Operation Principle

When the substance being measured restricts the rotation of the paddle, the motor rotates around its axis. This activates the internal micro switch, which outputs a detection signal. At the same time, the power supplied to the motor is interrupted. (This state indicates that a detection has been made.)

When the substance being measured is no longer present and the restriction on the rotation of the paddle is removed, the force of the internal spring causes the paddle to return to its original movement. The detection signal is switched and, at the same time, the power to the motor is supplied, which makes the paddle start rotating again. (This state indicates that no detection has been made.)



Power supply voltage	100/110 VAC 50/60 Hz DPL Type: 24 VDC \pm 10% 200/220 VAC 50/60 Hz
*Made-to-order	Other voltages are also available.
Connection	Flange attachment JIS 5K 65A (aluminum) *1
Power consumption	2.5 W
Contact output	1C PRL Type 250 VAC 5 A (resistive load) DPL Type 250 VAC 0.1 A (resistive load) PRL-Z Type 250 VAC 0.1 A (resistive load)
PRL-Z specifications	250 VAC 0.1 A

Detection torque	Approx. 10.0 N-cm
Slip torque	Approx. 30.0 N-cm
Revolutions	PR-1 RPM, DPL 2 RPM
Material	Man unit case & flange Die cast aluminum Shaft & paddle SUS 304 Seal Nitrile rubber
Paddle size	Standard specs: W-1 (80 x 80 mm) *2 500/500N Type: S-1 (30 x 60 mm)
Operating temperature	Inside tank: Max. 70°C Outside tank: Max. 55°C

Operating pressure	Inside tank: 0 to 196 kPa
Paint color	Munsell 10YR7.5/14
Protection rating	IP65

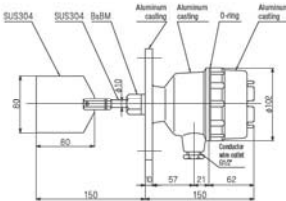
*1 Other flange sizes and materials also available.
*2 Other paddle sizes also available. (See page 2)
Changing paddle size changes dimension L, so take careful note of detection position when selecting paddle. Selecting an F-type folding paddle will decrease dimension L by 30 mm.
*Small-diameter seal caps are also available to reduce the chance of blockages when detecting fine powders.

Basic Type



PRL-100

Dimensions



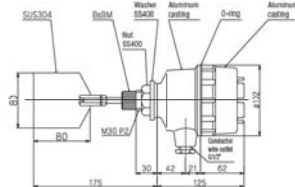
This is our most versatile model. It can be mounted on the side of the tank and used for low, mid, and high level detection.

Basic Type



PRL-101

Dimensions



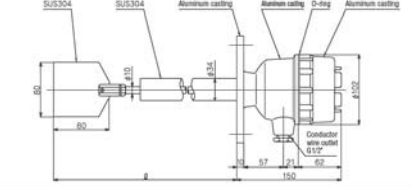
Connection: Threaded attachment M30 P2*
Dimension L is fixed. As the unit employs a threaded attachment, preparing special flanges will allow you to attach it in a variety of ways.

Protective Tube Type



PRL-101

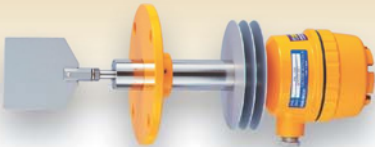
Dimensions



Standard length of dimension L: 250 mm, 300 mm, 600 mm, 1,000 mm
*Other lengths can be made in increments of 50 mm as required.
Dimension L can be made up to 2,000 mm long.

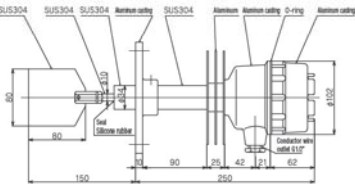
*A sliding flange model that allows dimension L to be adjusted on-site is also available. Specify maximum length required when ordering.

Heat-resistant Type



PRL-200

Dimensions



Operating temperature inside tank PRL-200 Max. 200°C
PRL-200S Max. 250°C to 400°C
Operating temperature outside tank Max. 55°C

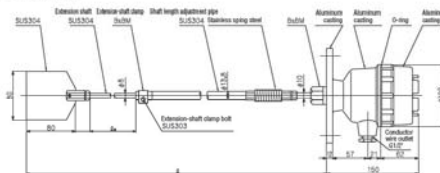
*Dimension L for PRL-200 is 150 mm.
If a longer length is required, order model number PRL-201.

Extension-shaft Type



PRL-100EB, 100ED

Dimensions



PRL-100EB dimension L 450 to 600 mm
650 to 1,000 mm
750 to 1,200 mm

PRL-100ED dimension L 1,000 to 1,500 mm
1,200 to 2,000 mm
1,500 to 2,500 mm
1,700 to 3,000 mm

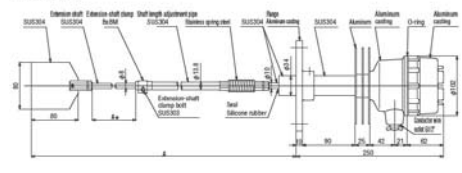
*Special model for vertical attachment.

Protective Tube Type



PRL-200EB, 200ED

Dimensions



PRL-200EB dimension L 450 to 600 mm
650 to 1,000 mm
750 to 1,200 mm

PRL-200ED dimension L 1,000 to 1,500 mm
1,200 to 2,000 mm
1,500 to 2,500 mm
1,700 to 3,000 mm

*Special model for vertical attachment.

