

# Explosion-proof Rotary Paddle Type Level Switch

## Standard Specifications

Power supply voltage	100 VAC 50/60 Hz
	110 VAC 50/60 Hz
	200 VAC 50/60 Hz
	220 VAC 50/60 Hz
Connection	Flange attachment JIS 5K 65A *1
Power consumption	2.5 W
Contact output	1C contact 250 VAC 5 A (resistive load)

Detection torque	Approx. 10.0 N·cm
Slip torque	Approx. 24.5 to 29.4 N·cm
Revolutions	1 RPM
Material	Main unit case & flange Die cast aluminum
	Shaft & paddle SUS 304
	Seal Nitrile rubber

Ambient operating temperature	Use between -10°C to +40°C
Operating pressure	Inside tank: 0 to 196 kPa
Paint color	Munsell 10YR7.5/14
Pressure-resistant and explosion-proof rating	d2G4

\*1 Other flange sizes and materials also available.

### POINT

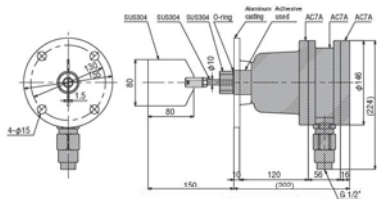
- An wiring tube cable gland is always attached to the conductor wire outlet. Specify one of the following:  
Applicable cable range:  $\phi 10$  to  $\phi 12$ , Cable gland model no.: SXC-16B-1  
Applicable cable range:  $\phi 8$  to  $\phi 10$ , Cable gland model no.: SXC-16B-2
- Wire correctly in accordance with the stipulations of explosion-proof regulations.

### Basic Type



#### PRL-S7

##### Dimensions



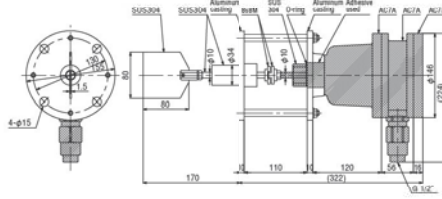
Dimension L for PRL-S7 is 150 mm.  
If a longer length for dimension L is required, select the protection tube model PRL-S7-25.

### Double Flange Type



#### PRL-F7

##### Dimensions



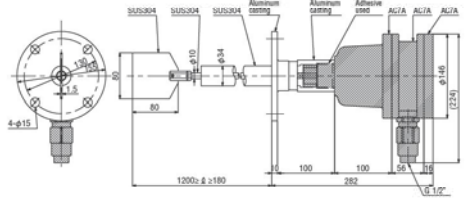
PRL-F7 is available as a heat-resistant model by changing the seal material to silicone. In this case, the model number is PRL-F7H.  
PRL-F7 can also be made with acrylic piping for outdoor use. (Heat-resistant up to 200°C)

### Protective Tube Type



#### PRL-G7-25

##### Dimensions



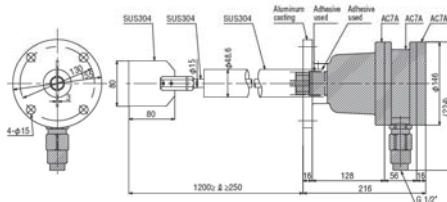
The minimum length of dimension L for PRL-G7-25 is 180 mm.  
Specify this model if required length for dimension L is longer than that of PRL-S7.  
Lengths can be made to order in increments of 50 mm.

### Heavy Duty Type



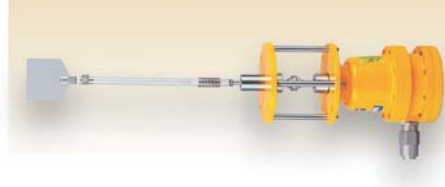
#### PRL-G7-40

##### Dimensions



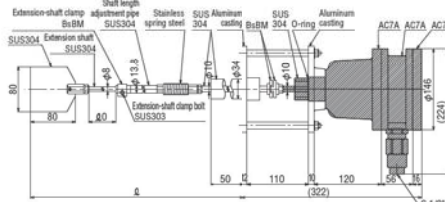
The minimum length of dimension L for PRL-G7-40 is 250 mm.  
PRL-G7-40 is an improved spec, heavy duty model with a shaft diameter of 15 mm and a protection tube diameter of 48.6 mm.

### Double Flange Extension-shaft Type



#### PRL-F7EB

##### Dimensions



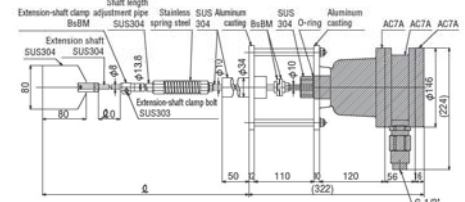
PRL-F7EB dimension L 470 to 620 mm  
670 to 1,020 mm  
770 to 1,220 mm

### Double Flange Extension-shaft Type



#### PRL-F7ED

##### Dimensions



PRL-F7ED dimension L 1,020 to 1,520 mm  
1,220 to 2,020 mm  
1,520 to 2,520 mm  
1,720 to 3,020 mm  
Heat-resistant models are also available.